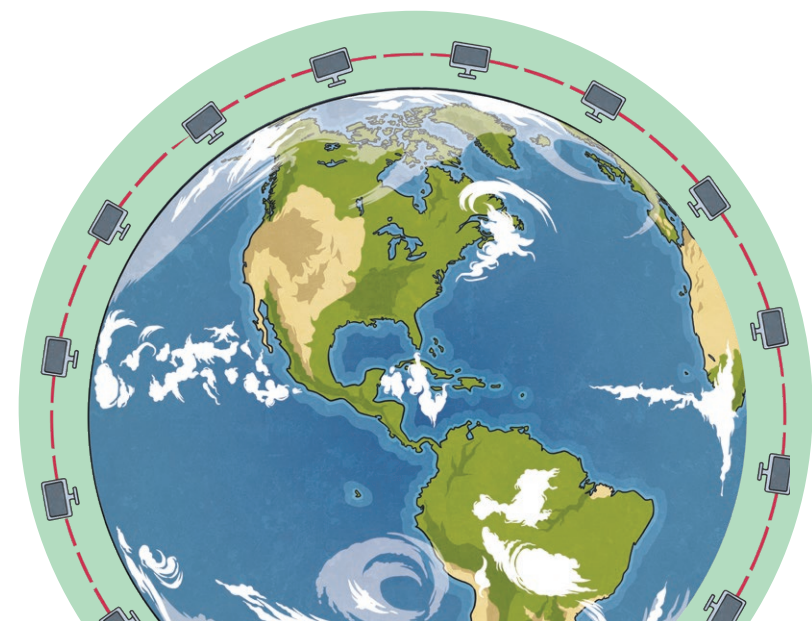


Key Vocabulary	
Internet Protocol Address	Each computing device that connects to the Internet, has something called an Internet Protocol address (IP address) . This its own unique address which is made up of numbers.
Internet Service Provider (ISP)	A company that provides access to the Internet, either using cables, such as fibre-optic or copper or using wireless technology.
search engine	A search engine is a service you use on the Internet to help you find information via the World Wide Web .
web browser	A web browser allows you to access the Internet, including search engines and other web pages .
web page	This is a specific page that is viewed on a web browser by entering a URL address . It can display text, images and hyperlinks to other web pages .
website	This is a collection of web pages grouped together.
World Wide Web	The World Wide Web is a collection of web pages found on a network of computers.
Uniform Resource Locator (URL)	This is the address given to find web pages on a web browser , for example, www.twinkl.co.uk .

The Internet

The Internet is a network of computers connected to each other all around the world.

The concept of the Internet was created by Robert Kahn and Vinton Cerf. You can access the Internet by connecting many digital devices to it, such as laptops, computers, tablets, smartphones, smartwatches and gaming consoles.



Stop and Think - Don't Choose the Weakest Link!

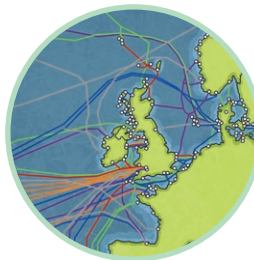
When making searches online, be sure to check the reliability of the link by:

1. checking there is an **s** at the end of the **https://** ;
2. looking for a padlock;
3. looking at a **web page's URL** and checking the top-level domain (.com, .co.uk, .org, .net);
4. checking the name of the **website** to see if it is one you have heard of before, such as BBC Bitesize or National Geographic.

How Do Search Engines Work?

When looking for something like an image, a request is sent in a packet to a web server. Each computer has its own **IP address** which is like a postcode. Requests can be made by fibre-optic cables under the sea (submarine cables) or via satellite. The web server can then send the information back to your computer.

Wireless technology can also be used to connect to the Internet which uses radio signals to send and receive data via a router.



Using the Internet

Bookmarking is where you can save a **web page** you'd like to revisit by clicking on the star in the address bar. Microsoft refer to this as a favourite.



There are different ways to **copy and paste** from a web page.

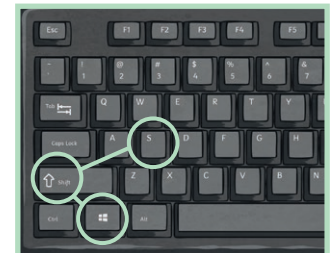
- Press Ctrl and C to copy and Ctrl and V to paste.



- Right-click and copy, right-click and paste.



- Use the Snipping Tool on your device.



- Right-click and save the image, then insert it into a document.